



**In this newsletter:**

- [1. Introduction](#)
- [2. National news](#)
- [3. Local news and events](#)
- [4. Partnership working](#)
- [5. Updates from across the county](#)

## 1. Introduction

Welcome to our latest copy of Suffolk Flood and Coast News which I hope gives you an insight into the breadth of activities the Suffolk Flood Risk Management Partnership and Suffolk Coast Forum members undertake.

## 2. National news

### 2.1 Flood Re

April saw the launch of Flood Re, a new national scheme designed to help provide better access to affordable home insurance for households in high flood-risk areas, including those affected by significant surface water flooding. It represents a long-term, sustainable approach to providing home insurance for those at flood risk. The Suffolk Joint Emergency Planning Unit, amongst others, has been actively promoting this initiative to both existing Community Emergency Groups and Parishes across the County. To find out more, email [emergency.planning@suffolk.gov.uk](mailto:emergency.planning@suffolk.gov.uk) or visit the [Get Prepared Now website](#).

Visit the [Flood Re website](#) for more information and a list of participating insurers. An information leaflet describing how Flood Re will work for householders is available [HERE](#).

### 2.2 New Environmental Permitting Regulations

From April 6<sup>th</sup> new Environmental Permitting Regulations replace Flood Defence Consents for landowners wishing to work on main rivers. For details see [HERE](#).

Works that are carried out in or near a main river or sea defence are regulated under the environmental permitting regulations (EPR) as 'flood risk activities' and require Environment Agency approval. Lower risk activities, except in environmentally designated sites, will become either excluded or exempt from the regulations. There is a [list of 27 exemptions](#) and their conditions for flood risk activities. Activities that present a higher risk of flooding or to the environment will require a permit. Charges for permits are set to rise.

## 2.3 Updates climate change advice

The Environment Agency has updated its climate change advice to flood and coastal erosion risk management authorities for development and appraisal of flood and coastal erosion risk management projects. An updated version of the EA document 'Adapting to Climate Change: Advice to Flood & Coastal Erosion Risk Management Authorities' has been published and is available [HERE](#).

## 2.4 Local Government Association Coastal Special Interest Group

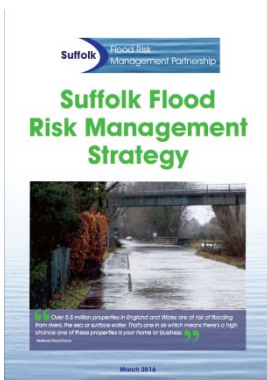
This year SIG members and officers' annual study tour will focus on the work, issues and learning from North Norfolk District Council. The event will be held in June and NNDC are hoping their local MP Liz Truss, who also happens to be the Secretary of State for Environment, Food and Rural Affairs will attend as guest.

## 2.5 Environment Agency Flood and Coast conference

The national [Flood and Coast](#) conference 2016 was held in Telford earlier this year. There were a huge number of presentations, this included Paul Mackie (funding opportunities) and Bill Parker (coastal adaptation) from Suffolk. This provided a valuable opportunity to meet a wide range of experts and discuss topics relevant to Suffolk.

# 3. Local news and events

## 3.1 Adoption of revised Suffolk Flood Risk Management Strategy



Important revisions to the Suffolk Flood Risk Management Strategy were approved in March by Suffolk County Council's Cabinet. The most important area of the strategy that has been strengthened is how Suffolk ensures that new housing and commercial development does not increase flood risk, focussing on using sustainable drainage systems (SuDS) wherever possible. The primary principle is that wherever possible, developers should be putting in above-ground SuDS to deliver flood management, management of water quality and amenity and environmental enhancements. It also specifies that long-term maintenance processes for drainage systems are put in place.

A strategy was first adopted in February 2013 and is a statutory requirement under the Flood and Water Management Act 2010. It influences the flood management activities of all local partner organisations: Environment Agency, planning authorities, drainage boards, Anglian Water and the county council. It also explains how other community partners can play their part in assisting these agencies to reduce the risk and impact of flooding.

There is an accompanying action plan, which is delivered and monitored by the [Suffolk Flood Risk Management Partnership](#). You can access the documents using the following links:

- [The Suffolk Flood Risk Management Strategy and Appendices](#)
- [A summary of the Strategy - Managing flood risk in Suffolk](#)
- [The Action Plan](#)

If you would like a hard copy of the Strategy or Appendices please contact [Steff Jones](#).

### 3.2 Suffolk Coast and Estuaries 5<sup>th</sup> Annual Community Conference

You are invited to the Suffolk Coast and Estuaries 5<sup>th</sup> Annual Community Conference on Friday 7<sup>th</sup> October at Snape Maltings. The theme of this year's conference is 'towards a resilient future for our coast and estuaries' and as usual we have an interesting range of speakers, workshops and displays. To view the invitation click [HERE](#) and RSVP to [Lucy Williams](mailto:lucy.williams@eastsoffolk.gov.uk).



# You are invited to

## Suffolk Coast & Estuaries 5th Annual Community Conference

Friday 7 October 2016 • Hoffman Building • Snape Maltings Concert Hall

*Suffolk—towards a resilient future  
for our estuaries and coast*

The importance of resilience has never been so critical. In 2015 and early 2016 communities in the north of England struggled to deal with the impacts of huge volumes of flood water and the long process of getting their communities and businesses back on track. In Suffolk, we know how difficult this can be with the 2013 tidal surge still sharp in our memories.

We already have good examples in our communities of people, wildlife and the environment adapting to change and building resilience. We have examples of innovations in engineering which are allowing us to build for resilience. And yet there is more to be done and much to learn from others.

This year's conference aims to support the people in our communities and businesses to work together towards a more resilient future.

**Please RSVP to Lucy Williams at [lucy.williams@eastsoffolk.gov.uk](mailto:lucy.williams@eastsoffolk.gov.uk)**  
Do let us know if you have any specific dietary requirements or needs



[www.greensuffolk.org/suffolkcoastforum](http://www.greensuffolk.org/suffolkcoastforum)



### 3.3 Coastal Partnership East

1st April was a key date for maritime local authority teams with responsibilities for managing the coast from Holkham, North Norfolk to Landguard Point in Suffolk. A new team combines the resources and expertise of four local authorities working in equitable partnership, led by Bill Parker as head of the new Coastal Partnership East. The team is overseen by a formal governance structure including a cabinet member from each authority with Cllr Angie Fitch-Tillett (NNDC) as chairman of the Board. For more details contact Bill Parker on 01394 444553 or email [bill.parker@eastsuffolk.gov.uk](mailto:bill.parker@eastsuffolk.gov.uk).

### 3.4 Working with the Martine Management Organisation (MMO)

**Licensing:** The MMO licence required to undertake saltmarsh restoration works at Waldringfield (Deben) proved a complicated process. Early engagement with the Eastern Inshore Fisheries and Conservation Authority and other regulators was undertaken to help smooth the process. The licence has now been granted but the costs and requirements from the MMO did not fully reflect this excellent pre-application engagement work.

The MMO licensing process is causing concern, both in terms of costs and time taken to process applications, particularly for those wishing to undertake small-scale saltmarsh restoration and other works to enhance the environment. In addition there have been issues of inconsistencies between conditions imposed on dredging licences in the River Orwell. The Suffolk Coast Forum has written to the MMO, copied to the Minister, expressing concern about these issues and awaits response.

**Marine Planning:** The [East Marine plan](#), covering the majority of the east coast was completed in 2014. In the coming year the MMO, working with local partners, will be developing the remaining marine plans, including one covering the [South East](#) area. This includes the Stour and Orwell estuaries and the important ports of Felixstowe and Ipswich.

### 3.5 Suffolk Saltmarsh Group

The AONB team is facilitating a Suffolk Saltmarsh Group to provide a partnership approach to monitoring, research, funding, licensing and disseminating information. Estuary Management Groups and other interested organisations will meet to share their experiences of undertaking the vital work of restoring this natural flood defence, habitat, landscape feature and carbon store.

Of particular interest to this group will be the Deben Saltmarsh pilot which is being progressed by the East Suffolk IDB with the Deben Estuary Partnership, the County Council Greenest County and Carbon Charter teams, and working closely with East Suffolk funding staff to develop a new model for investment in our saltmarshes. For more information contact [Karen Thomas](#).

### 3.6 Suffolk Shoreline Management Plan (SMP)

Updated summaries of the SMP are available [HERE](#)

The responses to the Alde & Ore Draft Estuary Plan highlighted concerns about the SMP policy of 'No Active Intervention' south of the Martello Tower, Aldeburgh in 10 years' time. It has been agreed to review this SMP policy now that the Estuary Plan is in place.

### 3.7 Coastal Access

Natural England is progressing the roll out of the [England Coast Path National Trail](#), currently focusing on the stretches between Hopton and Aldeburgh and the Stour Estuary. Natural England advisers are currently "walking the course" looking at alignment options and at how to take into account the needs of landowners, coastal change and the conservation of sensitive habitats and

species. They are speaking to landowners and managers and liaising closely with key stakeholders and specialists. This activity will continue for some months.

The Suffolk Coast Forum has raised a number of concerns about the process and has written to the Minister seeking answers to fundamental issues such as how the balance is made between the need for access and protection of sensitive environments; how the discretionary powers to take the path up an estuary will be judged and seeking greater involvement of local partnerships in the process. We await a response.

### 3.8 Estuary defence / Rights of Way trial

Over the past 4 years the Suffolk Coast Forum has been trialling new methods of making estuary defences more resilient to overtopping as well as integrating footpath surfacing into the work (*example picture right*). An interim report outlining the trial and latest findings is available [HERE](#).



### 3.10 Coastal Community Teams

Coastal Community Teams are a Government initiative across England which is intended to encourage greater local partnership working in coastal areas. 118 CCTs are now established across England, with three in Suffolk based around the Deben Peninsula, Lowestoft and Felixstowe. Each Coastal Community Team is intended to:

- Encourage greater local partnership working in coastal areas
- Support the development of local solutions to economic issues facing coastal communities
- Establish a network of teams across England who can work together and with Government to tackle issues facing coastal communities
- Encourage the sustainable use of heritage/cultural assets to provide both a focus for community activities and enhanced economic opportunities

Economic plans were submitted in January 2016 and work has begun on delivering them.

For more information about the teams contact:

[Samantha.Jones@eastsuffolk.gov.uk](mailto:Samantha.Jones@eastsuffolk.gov.uk) for Lowestoft

[Helen.greengrass@eastsuffolk.gov.uk](mailto:Helen.greengrass@eastsuffolk.gov.uk) for Felixstowe

[peter@culturalengine.org.uk](mailto:peter@culturalengine.org.uk) for the Deben Peninsula

## 4. Partnership working

### 4.1 Suffolk Holistic Water Management Project

There is a great deal of work being undertaken to progress the various aspects of the Holistic Management Project (HWMP). The aim of this pilot project is to consider water holistically, looking to manage this valuable resource so as to maximise its economic and environmental benefits and minimise flood risk.

Feasibility work for the Felixstowe Peninsula project continues including modelling and data gathering around the quality, quantity and farmer demand for the water currently being pumped out to see to drain the land. Other aspects include investigating the size and location of the shared reservoir as well as governance and financing models. A short film has been produced which highlights the HWMP's exciting and innovative approach to water management in Suffolk. The film,

made by UK Water Partnership, was screened at this year's UK Water and Farming Conference and can be viewed [HERE](#). More information about the HWMP can be found [HERE](#).

The Debenham Flood Risk Management Project also continues; modelling upstream natural flood management features such as basins and larger storage features indicate significant potential benefits for the village. A business case is being developed and a public consultation will take place in July.

## 4.2 Partnership working seminar

At the last Local Government Association Coastal Special Interest Group meeting in March a seminar was held on the topic of partnership working. Examples, learning, and efficiencies were shared with the group. A summary of learning from the day will be drafted and shared soon. In the meantime the slides can be found [HERE](#).

## 5. Updates from across the county

### 5.1 Lowestoft Flood Risk Management Project and the Gorleston to Lowestoft Coastal Strategy

Please see details of the consultation events related to these two important projects.

For further details of the projects see the websites

[www.lowestoffrmp.org.uk](http://www.lowestoffrmp.org.uk)

and [www.g2lcs.org.uk](http://www.g2lcs.org.uk)

### 5.2 Lowestoft South Beach

The work to repair the wall at Children's corner which was damaged in the 2013 tidal surge is now complete. The Coastal Community Teams have launched their seafront regeneration strategy for this area can be accessed [HERE](#).

Two strategies with one aim, to support local communities and businesses in Lowestoft and the surrounding area.  
A public consultation is being held between 6th June to 29th July 2016

## Gorleston to Lowestoft COASTAL STRATEGY

The Gorleston to Lowestoft Coastal Strategy has been developed with involvement from local people, businesses and organisations Waveney District Council and Gt Yarmouth Borough Council have developed a strategy to help manage the future of the coast between Gorleston and Pakefield. The options in the strategy have been amended to reflect comments at each stage of consultation. This is now the final stage and an important time to make sure you have had your say.

## Lowestoft Flood risk management project

The Lowestoft Flood Risk Management Project will reduce the risk of flooding from the sea, from rivers and from extreme rainfall. This £25m project is on-track for completion in 2020 and we want to share with you our long list of options. This is an important stage in the project and we'd like to hear what you think. Your views and ideas will help to shape the next stage.

### Come and see us at:

On 20th and 21st June from 2.30pm to 7pm  
The Hatfield Hotel, The Esplanade, Lowestoft. NR33 0QG

Online	Gorleston to Lowestoft Coastal Strategy - <a href="http://www.g2lcs.org.uk">www.g2lcs.org.uk</a> Lowestoft Flood Risk Management Project - <a href="http://www.lowestoffrmp.org.uk">www.lowestoffrmp.org.uk</a>
Local to you	Copies of the documents will be available to view at: Lowestoft Library, Clapham Road South, Lowestoft NR32 1DR Waveney District Council, Riverside, 4 Canning Road, Lowestoft. NR33 0EQ Marina Centre (next to the Marina Theatre) Lowestoft NR32 1HH

### 5.3 Kirkley

All actions from the [Kirkley Stream Section 19 investigation](#) are now completed or sufficiently advanced to close the S19. As part of the report a long-term maintenance schedule for the Kirkley Stream (from Carlton Colville through to Lake Lothing) is being finalised. Suggestions for further improving flood risk along Kirkley stream have been incorporated into the Lowestoft Flood Risk Management Project and can be viewed at the public consultation event mentioned above.

### 5.4 Benacre pumping station and the Kessingland levels



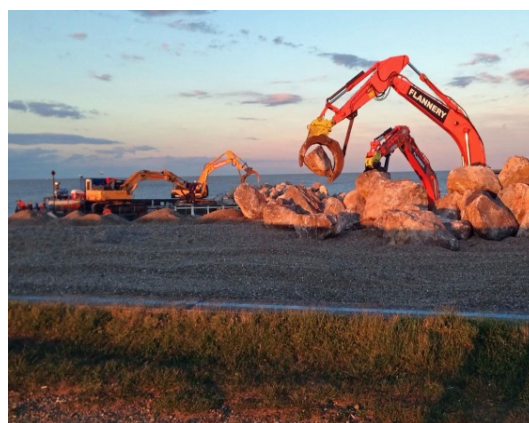
Strong southerly winds in March caused significant erosion to the north of the pumping station outfall. Without intervention in the coming few years the Kessingland levels could revert to being an estuary, with local properties and the A12 at increased flood risk. In order to manage this situation the Internal Drainage Board, Environment Agency, Suffolk County and Waveney District Councils are working together with landowners to consider long-term sustainable and affordable solutions for the management of this area. The solution is likely to require significant local funding.

### 5.5 Alde & Ore estuary

**Estuary Plan:** The Alde and Ore Estuary Partnership [Estuary Plan](#) has been amended following public consultation and was endorsed by Suffolk County Council and the Regional Flood & Coastal Committee. It will shortly go to Suffolk Coastal District Council for endorsement.

**Upgrade for Snape and Aldeburgh flood defences:** The Aldeburgh town wall and walls around Snape are to be upgraded, with work due to start in the autumn. Funding for the enhancements is coming from both national funds and private contributions which will deliver works above the usual standard in order to meet the Alde & Ore Estuary Plan requirements. There will be a public meeting in Snape Village Hall on 7 June at 6pm for anyone wishing to know more.

**Slaughden:** The Environment Agency is currently undertaking works on this vulnerable stretch of coastline. The rock being used was delivered by sea from a supplier in Cornwall (*photo right*). The cost of the works is approx. £400k.



In trying to find a long term solution to managing this stretch of coastline we continue to support research into the possibility of a “**shingle engine**” based on the [Dutch sand motor](#). Technically the idea looks promising but there are now many other aspects to consider, including environmental impact, funding and local opinion. More details are available [here](#).

### 5.6 Bawdsey Coastal Partnership

The significant erosion, experienced in January, to the north of East Lane, has been mitigated through emergency works which are now complete. This placed c70m of granite, extending the existing revetment. The Environment Agency will continue to monitor the erosion closely. Meanwhile, long term solutions to managing this area of coastline are being sought. A modelling



project is being undertaken by HR Wallingford to ascertain historical sediment transport patterns along the Bawdsey to Shingle Street coastal frontage. An economic study of the value of the area at risk has been completed.

## 5.7 Deben estuary

**Erosion of Deben estuary mouth:** There is concern about the ongoing, unexplained erosion in the mouth of the Deben between Bawdsey Quay and The Knolls. An exploratory study is desirable and the Deben Estuary Partnership has sought advice from Dr Helene Burningham, UCL, who knows the estuary mouth well. She is interested to look at what is happening and arrangements are being made for her to visit as soon as possible.

**Bawdsey Quay / Felixstowe Ferry:** The foot-ferry owner is considering a dial-a-ride service throughout the year. This would be very welcome but would probably require an annual, winter subsidy. Talks with all relevant bodies interested in taking this forward are to be arranged. It is hoped this might be considered as an alternative to the England Coast Path going right up both sides of this environmentally sensitive estuary.

## 5.8 Sudbury & Great Cornard

The first meeting of the Sudbury & Great Cornard Flood Risk Management Plan Officers Group will take place in June. A surface water management plan is to be developed over the coming months to understand the flood risks in the area; provide advice to planners / developers and seek ways to reduce flood risk, particularly from surface water flooding. For more information contact [jason.skilton@suffolk.gov.uk](mailto:jason.skilton@suffolk.gov.uk)

## 5.9 Stour & Orwell

**Ipswich Tidal Barrier:** The Environment Agency has now installed the temporary cofferdam and undertaken the initial dredging works ready for the installation of the foundation piles and construction of the connecting walls either side of the wet dock lock. This precedes the installation of the tidal barrier which is on target to be operational in early 2018. The total project costs exceeds £50million and will protect 4,000 properties and businesses from the risk of significant tidal flooding now and into the future as well as supporting further economic development and growth in the town.

**Stour & Orwell Estuaries Strategy review:** The Group's management strategy is under review and is open for comment in a six week public consultation – see [HERE](#). This strategy, as was the case with its predecessors, brings together the day to day work and ambitions of the many members of the group to find effective ways to sustainably manage the various interests of the estuaries while protecting their very special characteristics.

**Newsletter collated by:** Steff Jones, Environment Project Officer  
Suffolk County Council, Endeavour House, 8 Russell Road,  
Ipswich, IP1 2BX  
Tel: 01502 521406 Email: [steff.jones@suffolk.gov.uk](mailto:steff.jones@suffolk.gov.uk)

