

Needham Market Depth Data

Below are three sets of maps illustrating extents and depths for various flood events in Needham Market, there are 4 images to each set showing a different location.

Each set shows a different scale of flooding:-

1 in 2 yr event is the mean annual flood or has 50% chance of happening in any one year

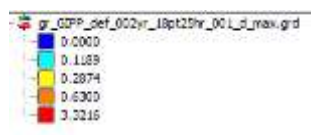
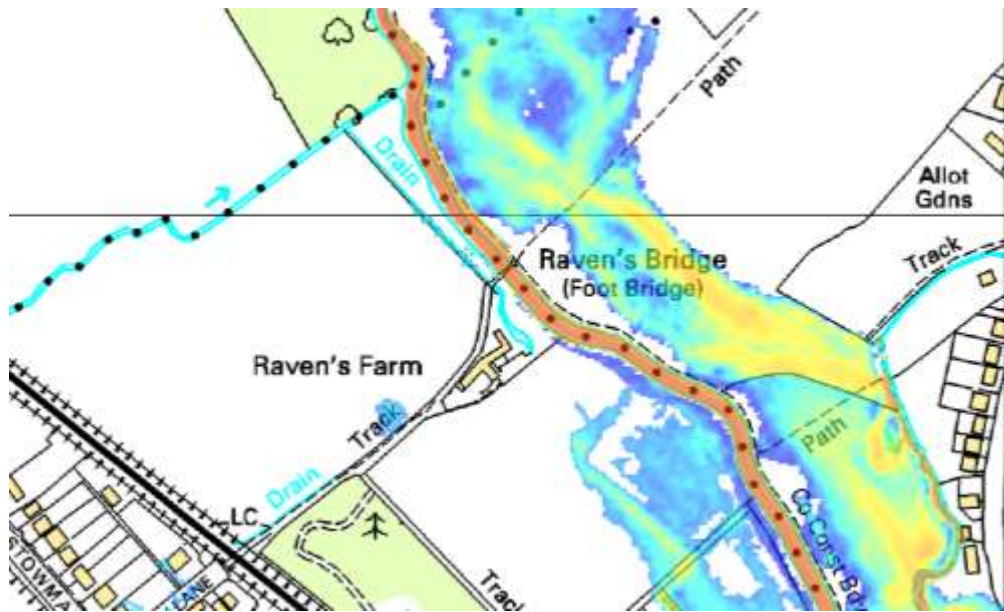
1 in 20 yr event has a 5% chance of occurring in any one year - close to seen in May 2012

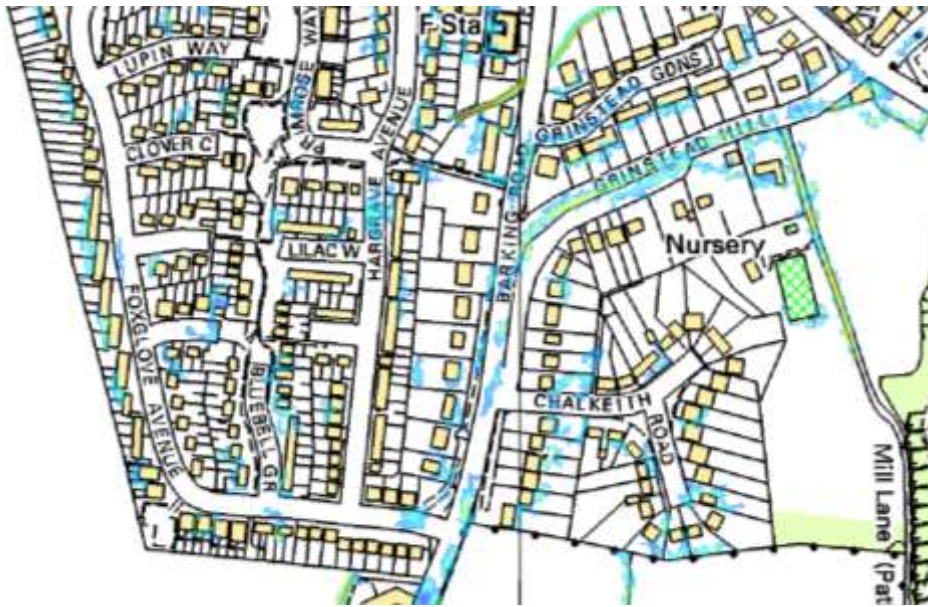
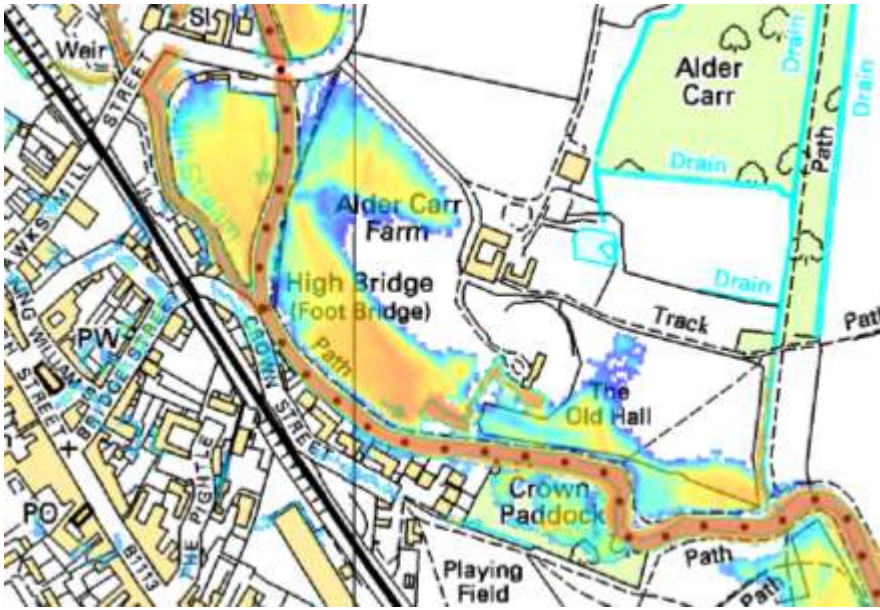
1 in 100 yr event has a 1% chance of occurring in any one year - fairly extreme event

Please use the coloured key at the right hand side of each set to assess the depth of water in metres above ground level. Blue is shallow flooding (<0.2m), yellow is moderate depth (0.2-0.5m), orange is deep (0.5-1m) and red is very deep flooding (>3m). Reds will be confined to the River Gipping.

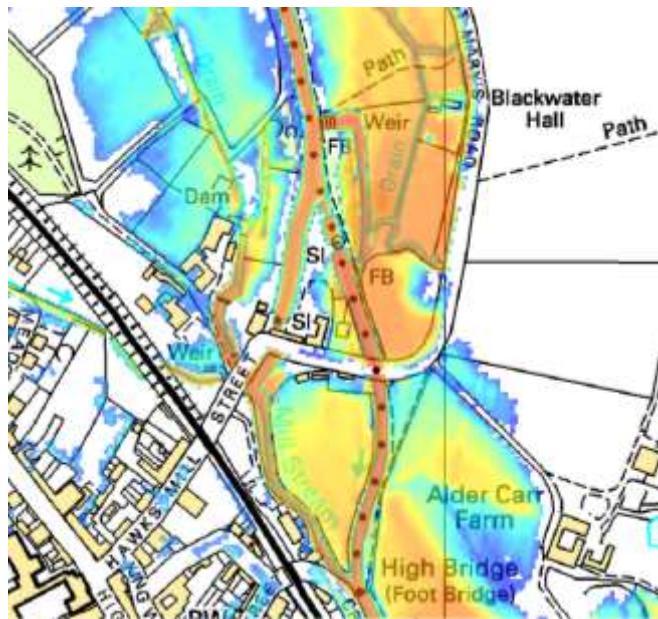
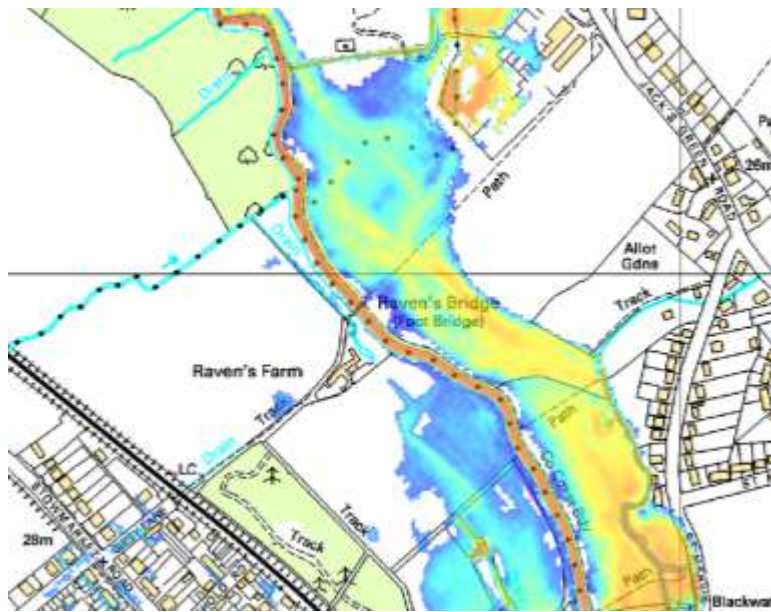
Generally door thresholds are 0.3m from ground level.

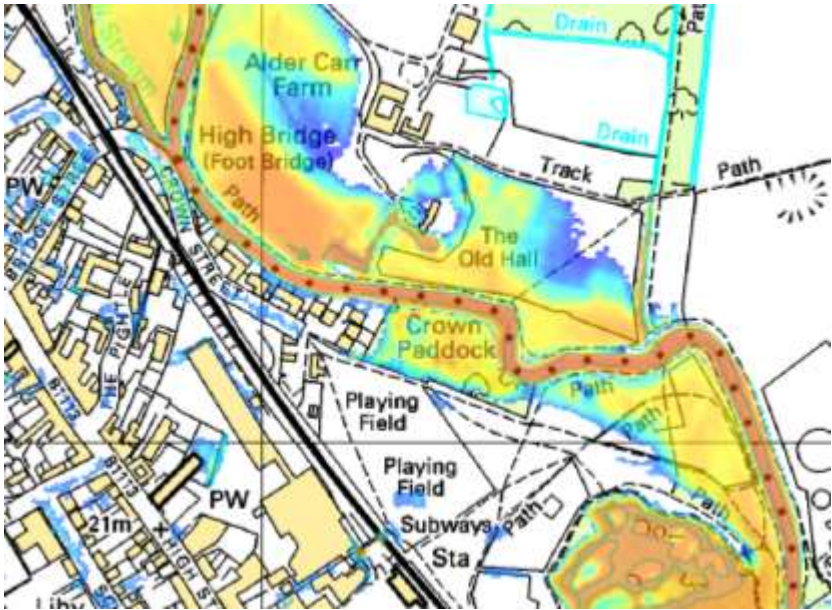
1:2 year Baseline Scenario





1:20 year baseline scenario





1:100 year Baseline Scenario

