



Thermal Imaging Loan Project Training

Suffolk Climate Change Partnership

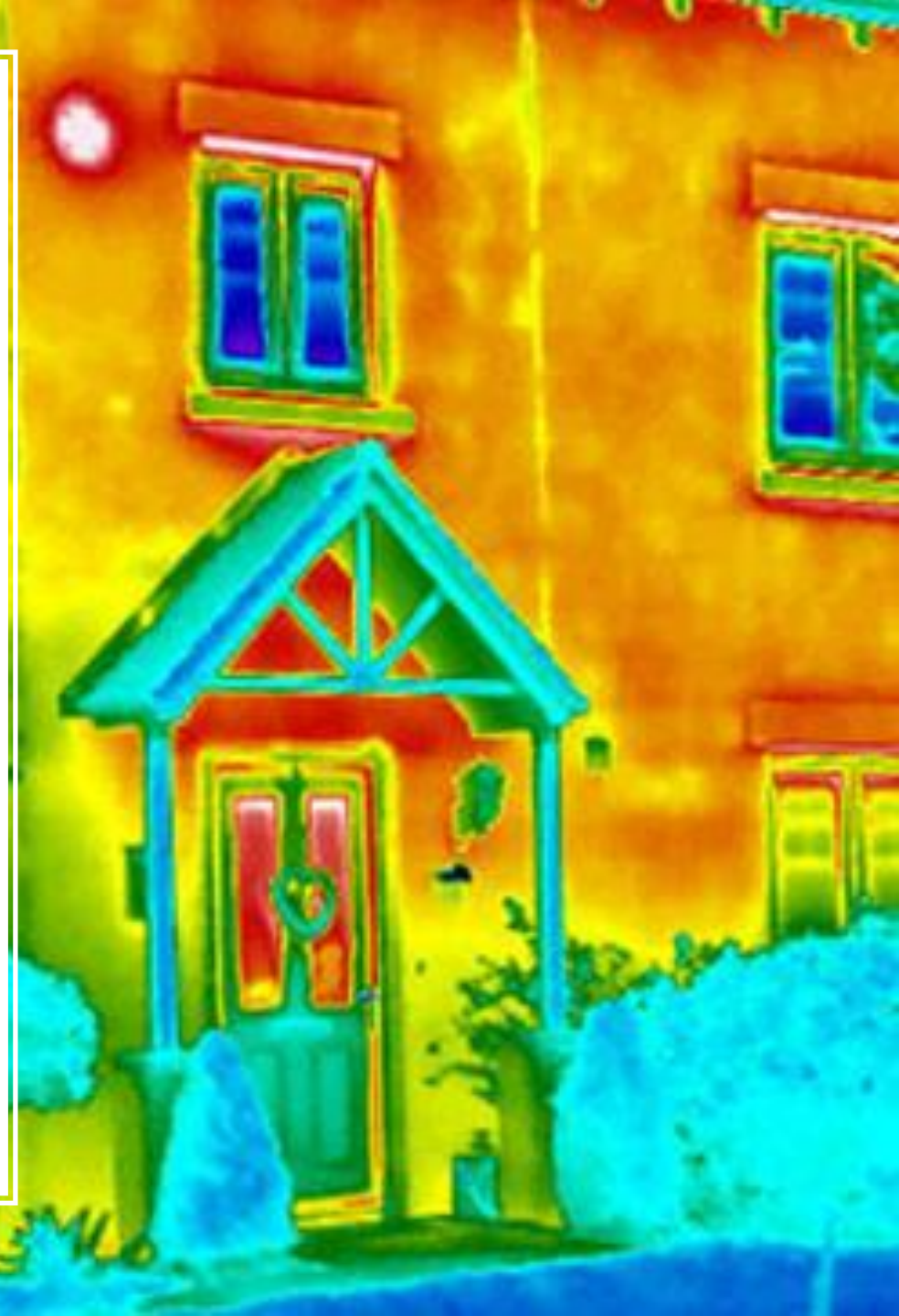
Thermal Imaging

Our aim is to help you raise awareness about insulation in your community so you can help advise people on how to improve the energy efficiency of their home. This could result in:

- ✓ a reduction in fuel bills
- ✓ helping people out of fuel poverty
- ✓ better health and well being
- ✓ a reduction in carbon emissions

A thermal imaging survey might

- ✓ identify places which might have draughts
- ✓ detect whether cavity wall insulation is patchy or missing
- ✓ detect areas with less loft insulation (though this is harder to do outside)





Borrowing a Camera

- The person who has signed the agreement form on behalf of your Community Group or Parish/Town Council is responsible for the camera.
- Our cameras are insured for loss or accidental damage but please:
 - Keep it with you or in a locked place
 - Don't lend it to anyone else
- We understand accidents happen so please report any damage or problems ASAP
- You will be loaned a Flir One Pro or a Flir One Edge Pro

Introducing the Flir One Pro

- There are both Android & iPhone versions
- Fits into your phone charger point
- The camera takes 40 mins to charge & lasts around 1 hour
- Your phone battery will also be reduced whilst in use, so we recommended using the portable battery charger with 2 USB points which is supplied too
- The camera comes in its own protective case but like your phone they won't take kindly to drops, bumps or bashes.
- Photos can be easily stored on your phone for interpreting in the warmth of your own home. You can then email to them to the householder.



Introducing the Flir One Edge Pro

- Bluetooth connection so works with either Android or Apple devices
- Can attach to your phone, or be used separately
- The battery lasts approximately 2 hours 30 minutes and takes 60 – 90 minutes to charge.
- Photos can be easily stored on your phone for interpreting in the warmth of your own home. You can then email to them to the householder.





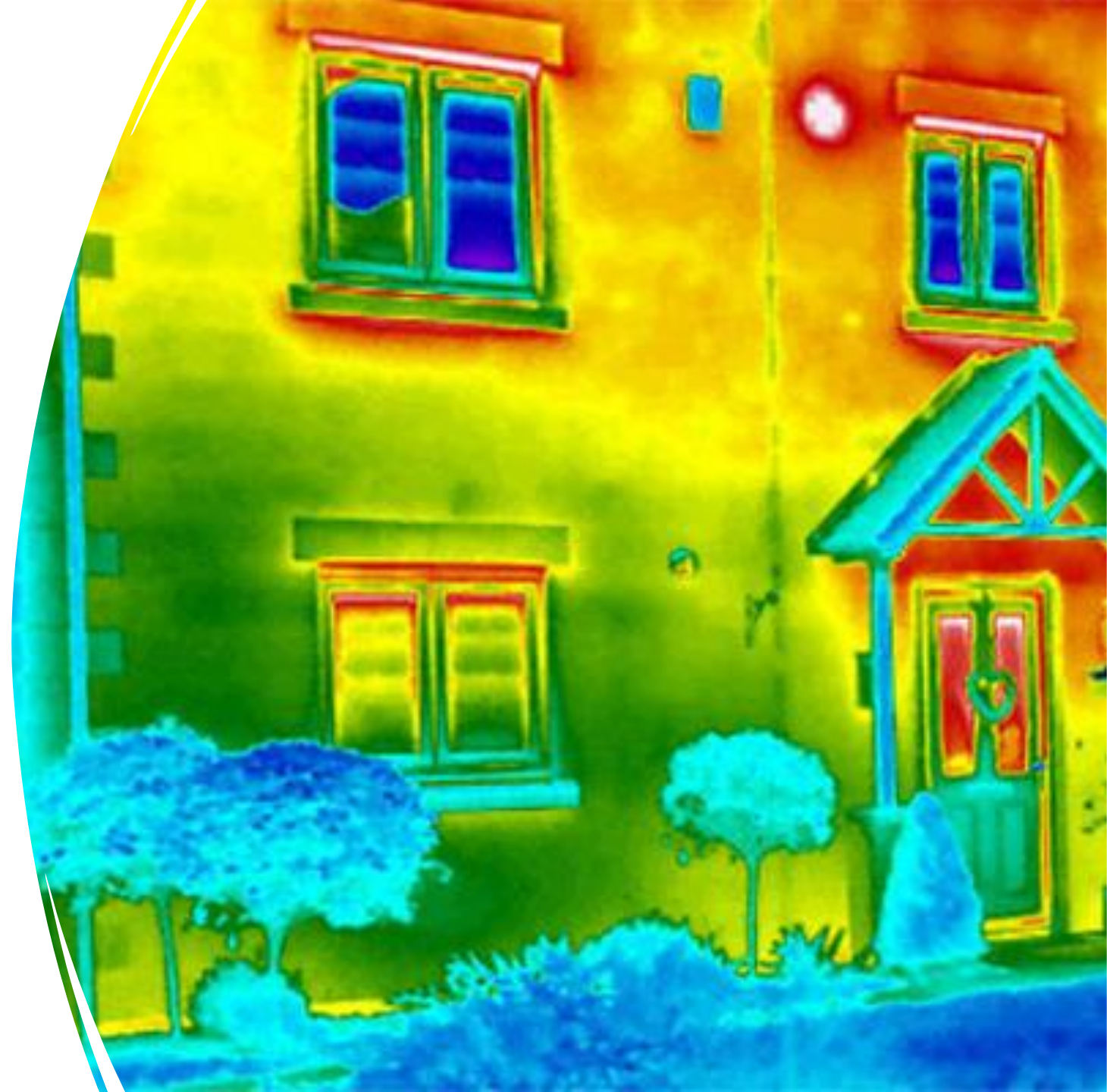
Ideal Conditions for use

- Indoors $>10^{\circ}\text{C}$ warmer than out
- Enough light for visible images
- No direct sun, rain or strong winds
- Thermal imaging works best during the colder months
- The cameras are available from November to April.

Resources

Please see the website pages for training, householder advice resources and a list of devices which are compatible with each camera:

- [Thermal Camera Training – Green Suffolk](#)
- [Thermal Imaging - Next Steps – Green Suffolk](#)



- By carrying out community thermal imaging surveys you are not only helping your local community save money and stay warm and healthy this winter, but you are also helping Suffolk reach its target of Net Zero by 2020.
- Thermal imaging is a fantastic, straightforward way to diagnose energy leaks from homes.
- The images can tell us immediately where costly heat is escaping from such as windows doors, walls and poorly insulated roof



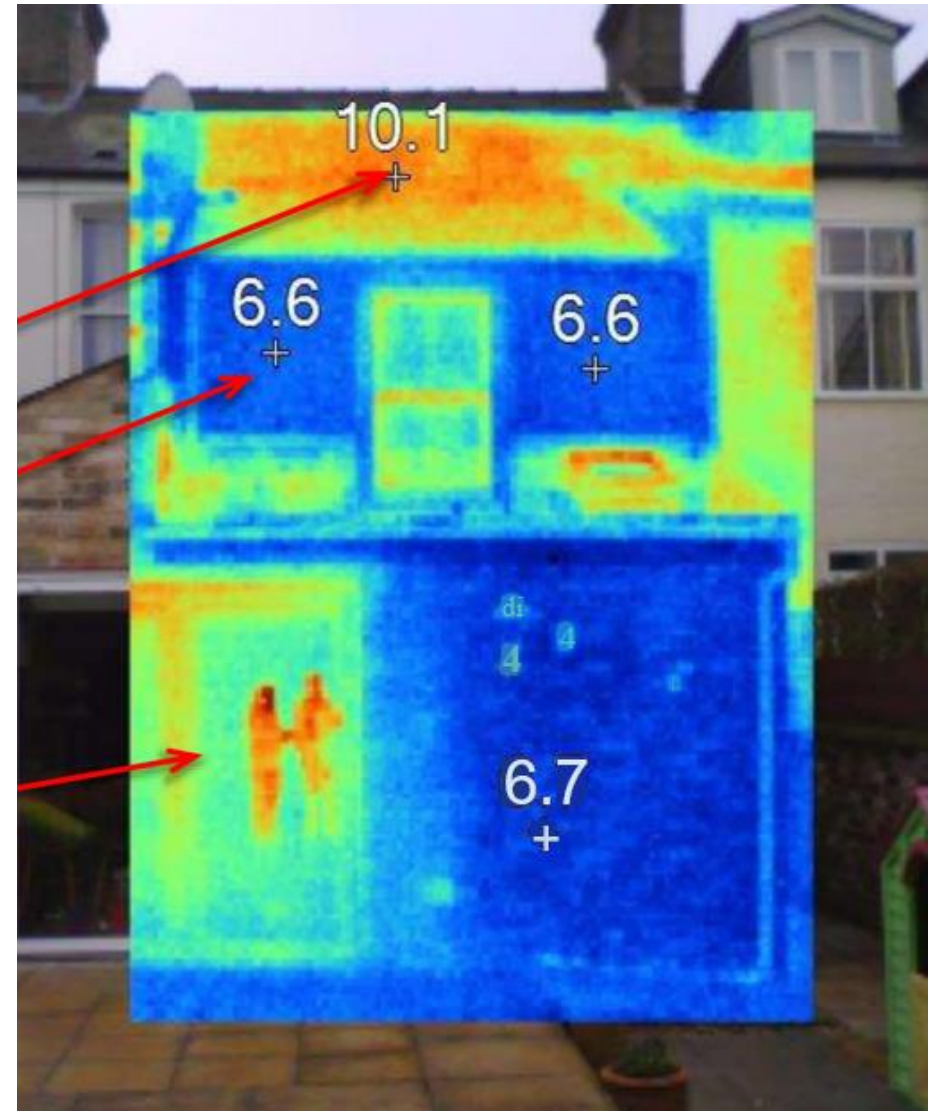
Interpreting the Images

Loft insulation: Poor = Warm

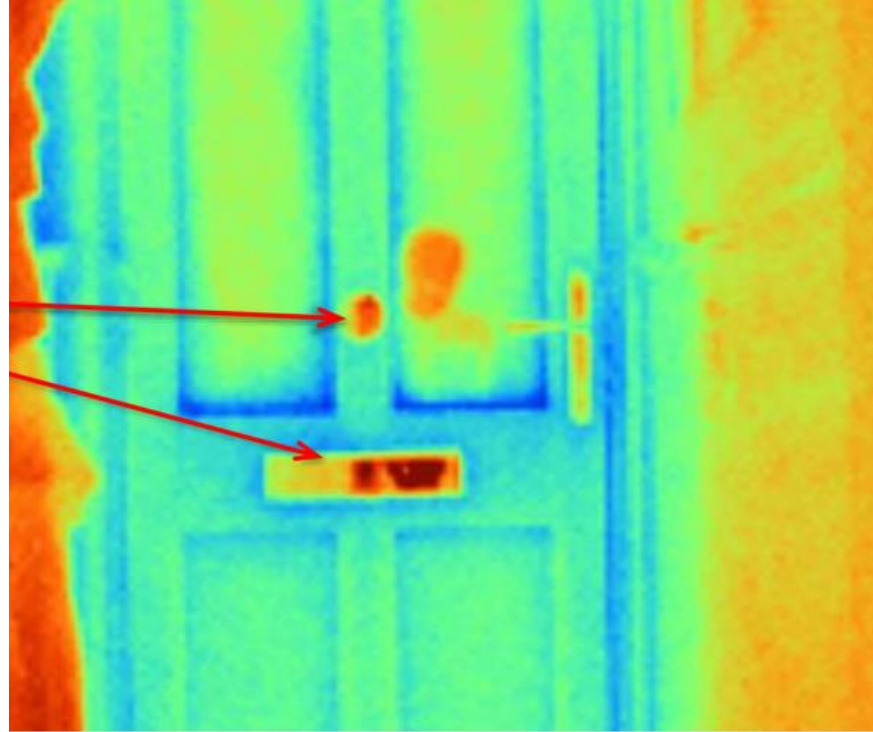
Wall insulation: Good = Cool

People = Reflections in glass
(you taking the survey!)

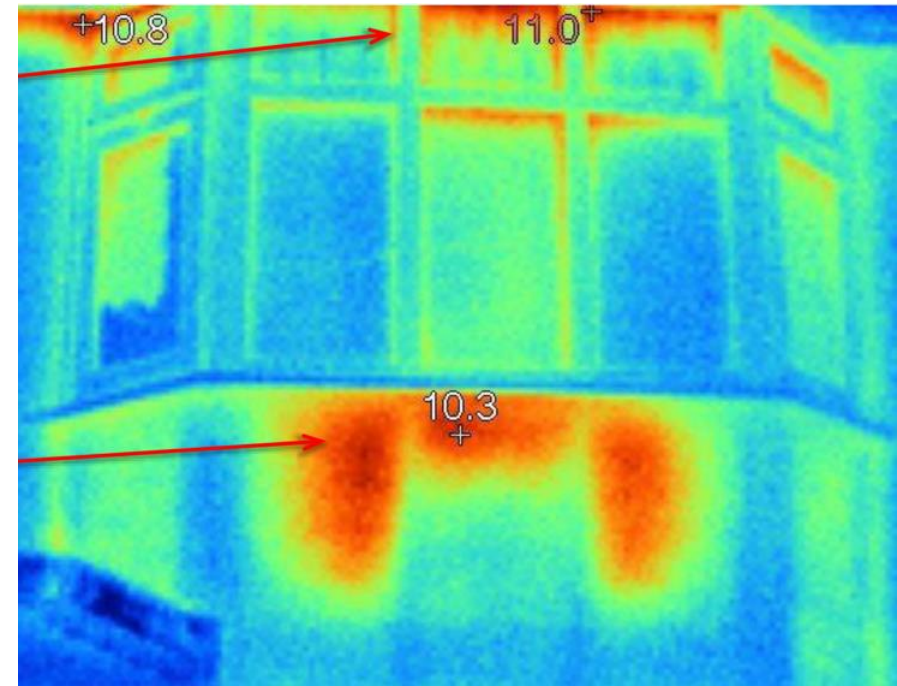
From outside: Warm = Leaky



Temperature errors
Shiny metal



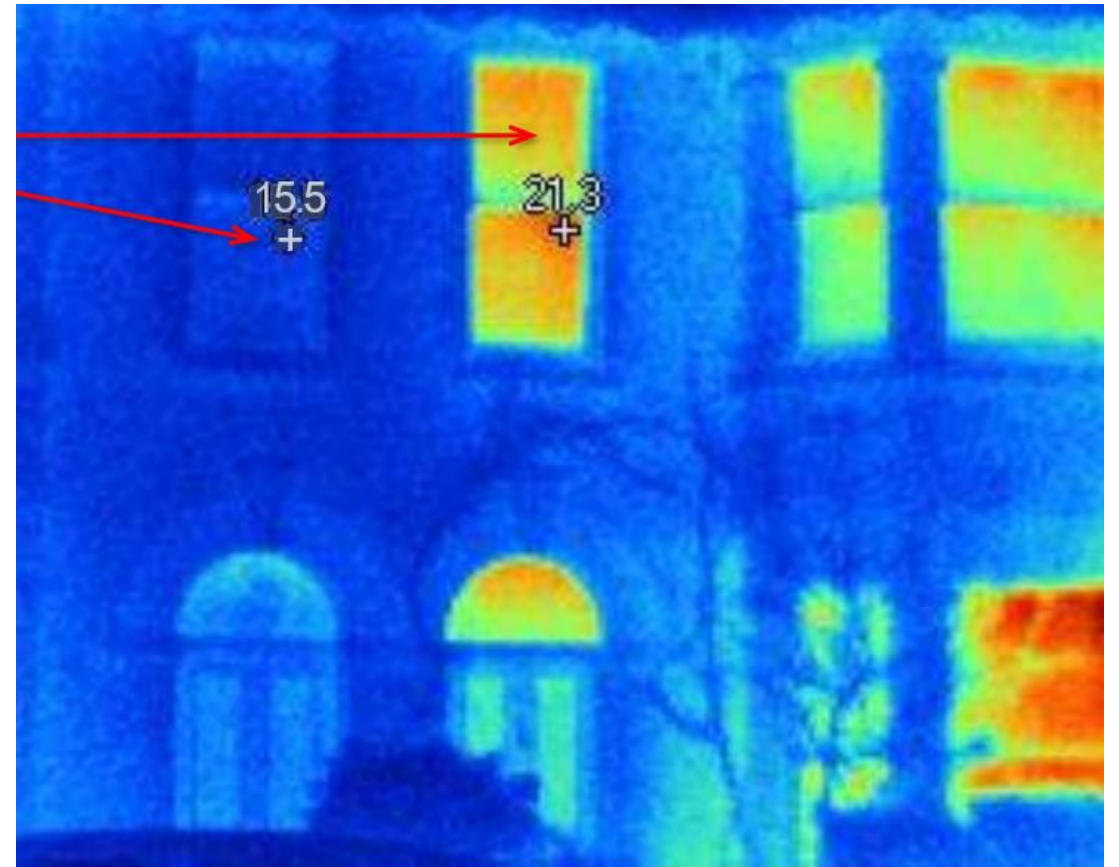
Draughty windows



Radiator without a
reflective foil panel

Why are the houses so different?

Different internal
temperatures?



After the Surveys – Then What ?

- Share images and survey results with homeowner
- Help signpost people in poorly insulated homes (rated D,E,F,G) & income under £36,000 to the Warm Homes scheme
- Encourage & support easy DIY insulation & draught fixes
- Encourage behavior change (closing curtains, turn down radiators by 1 degree etc)
- Fill out the Project Feedback & Evaluation form (emailed at end of loan)
- Consider running a Community Bulk Buy project for insulation & draught proofing measures

